

Lo Porto Domenico

NICCOLÒ PAGANINI

37 Sonate

per chitarra
(M.S. 84)

AB 33- BRAND 81

A cura di Giuseppe Gazzelloni

Edited by Giuseppe Gazzelloni

Sonata N. 1

Minuetto

3

5

7

9

11

13

15

MENUET

F. Ferrandiere
(Siglo XVIII)

f

p

f

p

f-p

f

p

2. cresc.

f

Maeri Vincenzo

AB 55 Brama
N. Vaganini 73

Allegretto



[D.C. al Fine]

S. DUARTE
OP 140

- XI -

♩ = 60

Largo, con dolore e liberamente

1 Put finger on A \flat , push sideways far enough to produce A \sharp , THEN pluck and allow to return to A \flat .
 2 as for 1 - G \sharp to A \flat

Hartmann: Rinaldo

AB55 Brano N° 43

J. DUARTE
OP 110

- XII -

♩ = 152
Energico

sempre (—)

Energico

4/4

8

4

7

11

14

17

20

24

28

H.XII

H.VII

C.III

C.VI

C.VII

H.XIX

poco rall.

8va

8va

Migliaccio Giovanni

di Paganini
Al 5° Brano n° 55

Andantino

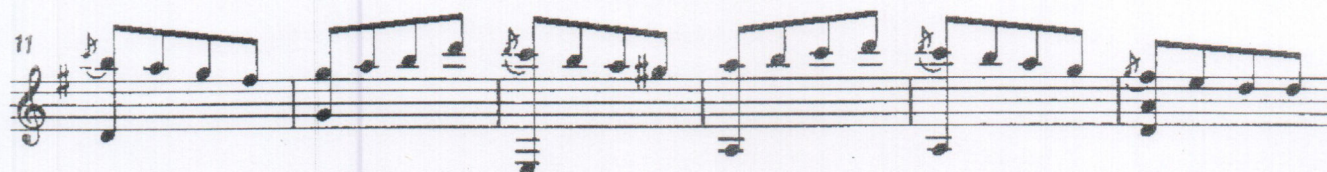
6



6



11



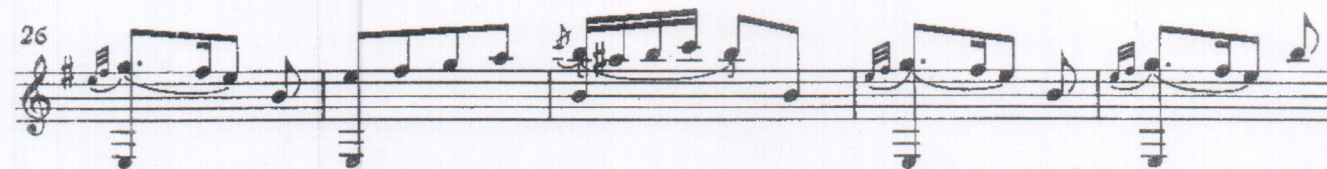
17



22



26



31



37



43



[D.C. al Maggiore]

MONTATO Maria ROSARIA.

AB 525 - BRANO
N. PAGANINI 91

Andantino

3

6

9

12

15

17

20

Finale

HERRODIE VINCENTO

AB55

BRAND N° 48

M. BARBIER

Rosa di Gerico

Lento non troppo

mf *p* *mf*

p *riten.*

tempo *movendo* *tempo*

f con libertà ritmica *ten.* *Andantino semplice* *pp* *tempo*

pp riten. *mf* *f*

VII *V* *III*

mp *p* *rit.* *tempo* *ppp*

VII

Omaggio a Piazzolla

A Allegro ♩ = 116 - 152

mf *i m m i*

p *m i*

B *m i m i* *m i m i* *a m i a m i*

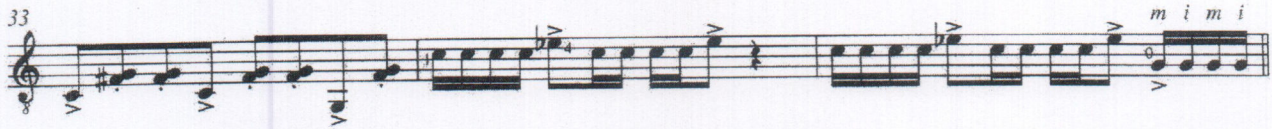
p *i m a* *legato* *p dolce* *rit.*

a tempo *(p) i a m i a m i*

D *p* *legato (vibrare tutti)* *sempre p*

rit. *breve a tempo* *i m m i* *mf*

p *m i*



-II-

S. DUARTE
OP 140

♩ = 172 at least
Prestissimo

Handwritten musical score for guitar, featuring a single melodic line on a treble clef staff with a key signature of two sharps (F# and C#). The score is divided into measures, with measure numbers 4, 8, 12, 15, 17, and 19 indicated at the start of their respective lines. The music is characterized by rapid sixteenth-note passages, often with slurs and ties. Fingering numbers (1-4) are provided for many notes. Dynamic markings include *f* (forte), *p sub.* (pianissimo), and *f sub.* (fortissimo). The piece concludes with a *poco rall.* (slightly slowing down) marking. A bracket labeled 'CI' spans measures 12 through 15.

Measure 4: *f*

Measure 8: *p sub.*, *f sub.*, *p sub.*

Measure 12: *f sub.*, *p sub.*, *f sub.*

Measure 15: *p sub.*

Measure 17: *f sub.*

Measure 19: *p sub.*, *f sub.*, *p sub.*, *poco rall.*

AB 5's Brand =
PAG.

22 *A tempo*
8 *f*

25

28

31

35

38

3/2/1 Correct Fingering?
Slurs?

p i a p i a p a m i a m i a m
apoyando